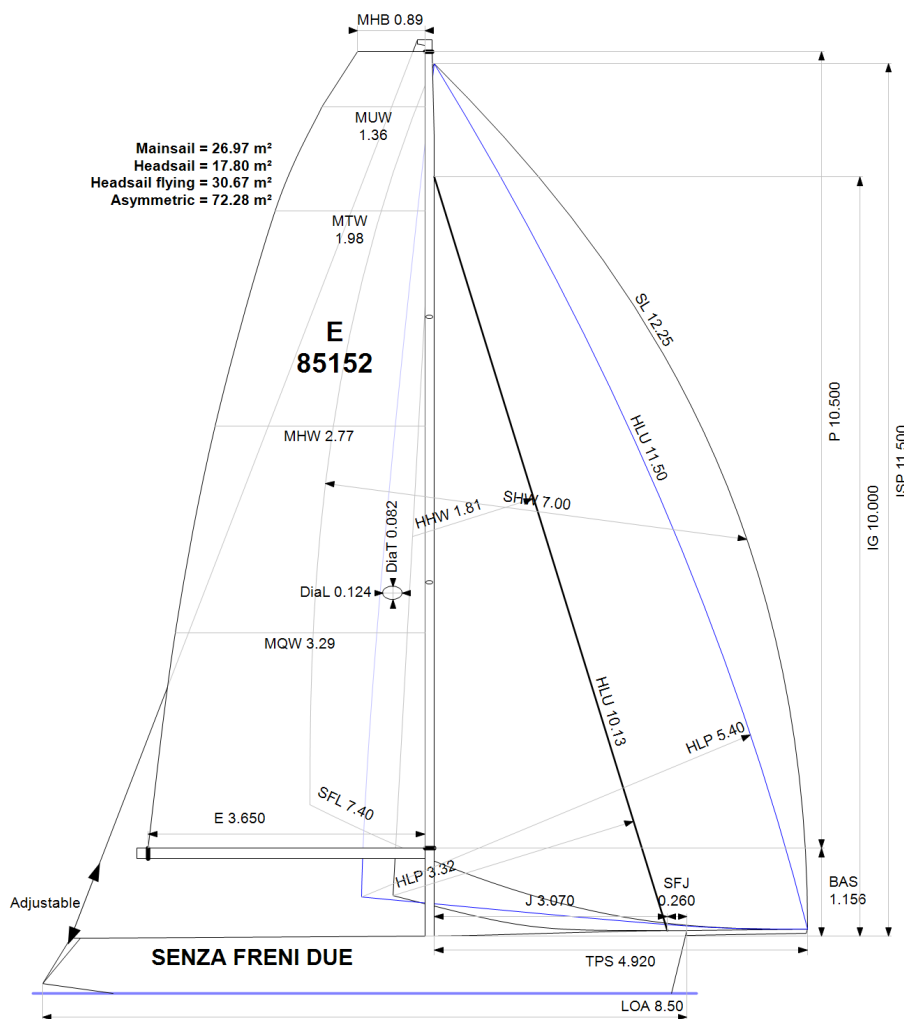


APH: **533.6**

CDL: **7.841**

GPH: **589.0**

CertNo: **149092**



BOAT

Class **ESSE 850**
Designer **FELCI**
Builder **PROTEUS YACHTS**
Age date **01/2013**
Series date **01/2004**
Offset file **S850.OD.OFF**
Data file **E85152_O**

HULL

Length Overall **8.500 m**
Maximum Beam **2.190 m**
Draft **1.999 m**
Displacement **1,222 kg**
DLR **3.0976**
IMS Division **Sportboat**
Dynamic Allowance **0.000%**
Age Allowance **0.487%**

PROPELLER

Installation **No Propeller**
Type **N/A**
Diameter **N/A**

CREW

Maximum weight **350 kg**
Minimum weight **263 kg** * when applied
Non Manual Power **No**
Crew Arm Extension **Loose or no lifelines**

SAIL AREAS (m²)

	Measured	Rated
Mainsail	26.97	27.93
Headsail Luffed	17.80	17.80
Headsail Flying	30.67	30.67
Symmetric		
Asymmetric	72.28	72.28

(All asymmetric spinnakers with SHW/SFL > 85%)

STORM SAIL AREAS (m²)

Trysail **6.71**
Storm Jib **5.14**
Heavy Weather Jib **13.87**

SAIL LIMITS

Headsails **5**
Spinnakers **4**

STABILITY

Righting Moment **N/A**
Stability Index **N/A**

COMMENTS

ONE-DESIGN CLUB CERTIFICATE

The owner and any other person in charge is responsible that boat is complying with her certificate in accordance with RRS 78.1 and ORC Rule 304.

Rated boat velocities in knots

Wind Velocity	6 kt	8 kt	10 kt	12 kt	14 kt	16 kt	20 kt
Beat Angles	41.8°	39.4°	39.4°	39.3°	39.4°	39.9°	41.1°
Beat VMG	4.12	4.56	4.71	4.77	4.78	4.78	4.71
52°	6.17	6.58	6.76	6.85	6.90	6.94	6.92
60°	6.43	6.83	7.02	7.14	7.24	7.31	7.34
75°	6.58	7.17	7.44	7.64	7.82	7.96	8.12
90°	6.51	7.22	7.78	8.12	8.42	8.69	9.06
110°	6.18	7.09	7.63	8.21	8.98	9.51	10.36
120°	6.04	7.07	7.88	8.49	9.08	9.67	10.81
135°	5.44	6.64	7.53	8.57	9.75	10.75	12.42
150°	4.59	5.81	6.70	7.49	8.45	9.62	12.83
Run VMG	3.97	5.03	5.81	6.49	7.32	8.33	11.11
Gybe Angles	143.0°	147.1°	151.4°	149.2°	145.6°	144.2°	146.6°

Time Allowances in secs/NM							
Wind Velocity	6 kt	8 kt	10 kt	12 kt	14 kt	16 kt	20 kt
Beat VMG	874.3	788.7	765.0	755.2	753.4	753.5	763.5
52°	583.3	547.0	532.7	525.9	521.8	518.7	520.6
60°	559.5	527.2	512.8	503.9	497.3	492.5	490.7
75°	546.8	502.3	483.7	471.2	460.7	452.2	443.3
90°	553.4	498.5	462.4	443.5	427.5	414.2	397.4
110°	582.9	507.7	472.0	438.2	401.0	378.5	347.5
120°	596.2	509.4	457.0	424.3	396.4	372.1	333.1
135°	661.2	542.5	478.2	420.2	369.2	334.8	289.9
150°	784.4	619.9	537.2	480.7	426.1	374.3	280.6
Run VMG	905.7	715.8	619.4	555.1	492.0	432.2	324.0
Selected Courses							
Windward / Leeward	890.0	752.3	692.2	655.1	622.7	592.8	543.8
All purpose	689.1	597.5	554.7	526.0	500.7	480.1	449.9

Single Number Scoring Options		
Course	Time On Distance	Time On Time
Windward / Leeward	665.7	0.9013
All purpose	533.6	1.1244

Custom scoring options for Germany

Scoring Option	Time On Time
Triple Number Coastal/Long Distance Low	0.9327
Triple Number Coastal/Long Distance Medium	1.1210
Triple Number Coastal/Long Distance High	1.2660
Triple Number Windward/Leeward Low	0.7307
Triple Number Windward/Leeward Medium	0.8989
Triple Number Windward/Leeward High	1.0311

Performance Curve	6 kt	8 kt	10 kt	12 kt	14 kt	16 kt	20 kt
Coastal/Long Distance	891.6	709.6	623.5	565.5	523.6	485.1	422.3