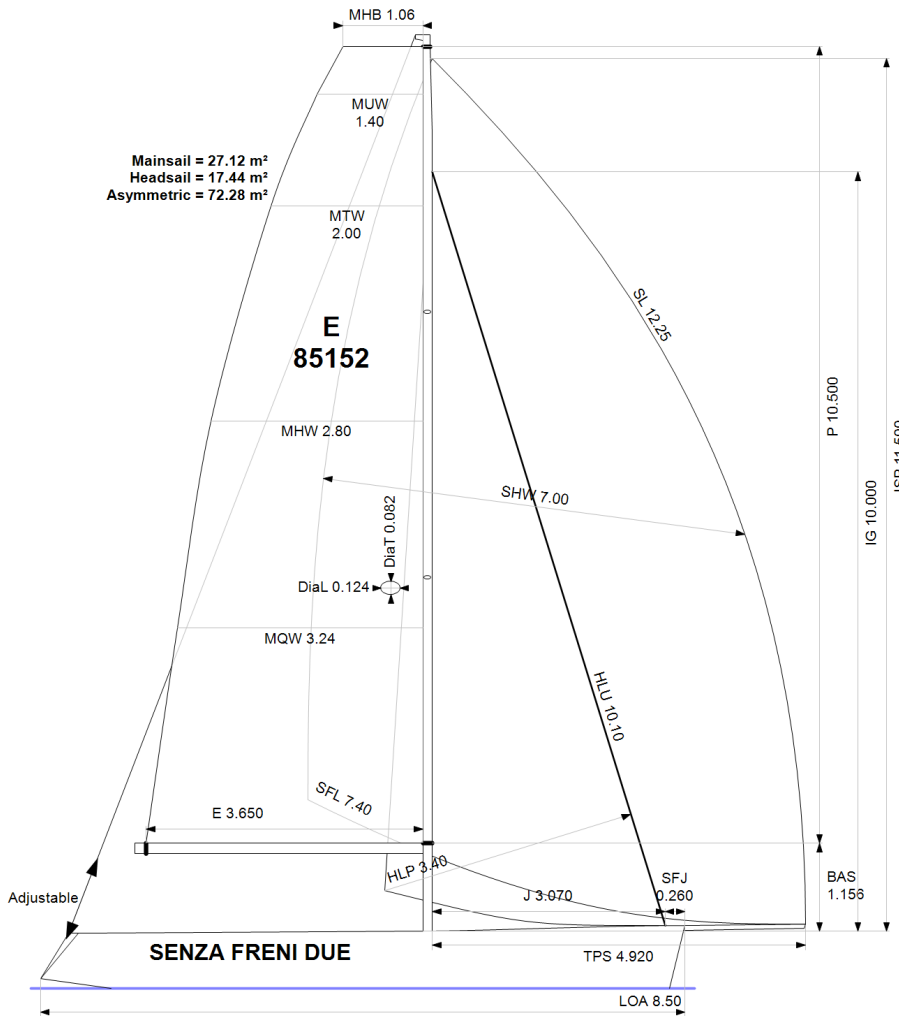


APH: **551.0**

CDL: **7.275**

GPH: **607.0**

CertNo: **149092**



#### BOAT

Class **ESSE 850**  
Designer **FELCI**  
Builder **PROTEUS YACHTS**  
Age date **01/2013**  
Series date **01/2004**  
Offset file **S850.OD.OFF**  
Data file **E85152**

#### HULL

Length Overall **8.500 m**  
Maximum Beam **2.190 m**  
Draft **1.999 m**  
Displacement **1,222 kg**  
DLR **3.0976**  
IMS Division **Sportboat**  
Dynamic Allowance **0.000%**  
Age Allowance **0.487%**

#### PROPELLER

Installation **No Propeller**  
Type **N/A**  
Diameter **N/A**

#### CREW

Maximum weight **210 kg**  
Minimum weight **120 kg** \* when applied  
Non Manual Power **No**  
Crew Arm Extension **Loose or no lifelines**

#### SAIL AREAS (m<sup>2</sup>)

	Measured	Rated
Mainsail	<b>27.12</b>	<b>28.06</b>
Headsail Luffed	<b>17.44</b>	<b>17.44</b>
Headsail Flying		
Symmetric		
Asymmetric	<b>72.28</b>	<b>72.28</b>

(All asymmetric spinnakers with SHW/SFL > 85%)

#### STORM SAIL AREAS (m<sup>2</sup>)

Trysail **6.71**  
Storm Jib **5.14**  
Heavy Weather Jib **13.87**

#### SAIL LIMITS

Headsails **5**  
Spinnakers **4**

#### STABILITY

Righting Moment **N/A**  
Stability Index **N/A**

#### COMMENTS

ONE-DESIGN CLUB CERTIFICATE

The owner and any other person in charge is responsible that boat is complying with her certificate in accordance with RRS 78.1 and ORC Rule 304.

#### Rated boat velocities in knots

Wind Velocity	6 kt	8 kt	10 kt	12 kt	14 kt	16 kt	20 kt
Beat Angles	42.0°	40.2°	40.2°	41.2°	42.0°	43.0°	44.7°
Beat VMG	3.87	4.29	4.43	4.45	4.44	4.39	4.26
52°	5.83	6.33	6.50	6.58	6.61	6.61	6.52
60°	6.13	6.60	6.78	6.89	6.95	6.98	6.94
75°	6.33	6.92	7.21	7.40	7.54	7.64	7.71
90°	6.24	7.00	7.55	7.88	8.14	8.35	8.60
110°	6.20	6.96	7.43	7.94	8.66	9.22	9.87
120°	6.09	7.08	7.71	8.25	8.80	9.34	10.46
135°	5.52	6.71	7.66	8.71	9.64	10.40	11.87
150°	4.65	5.88	6.78	7.65	8.74	9.99	13.07
Run VMG	4.03	5.09	5.88	6.63	7.57	8.65	11.32
Gybe Angles	143.0°	147.1°	151.0°	148.7°	146.0°	145.6°	148.9°

Time Allowances in secs/NM							
Wind Velocity	6 kt	8 kt	10 kt	12 kt	14 kt	16 kt	20 kt
Beat VMG	931.2	838.7	813.3	808.2	811.7	819.4	845.7
52°	617.1	569.0	553.5	547.1	544.8	544.5	552.5
60°	587.1	545.8	530.8	522.5	517.9	515.6	519.0
75°	569.0	520.0	499.5	486.5	477.3	471.1	467.0
90°	577.3	514.0	477.0	456.7	442.0	431.3	418.6
110°	580.3	517.5	484.3	453.2	415.5	390.5	364.9
120°	591.1	508.5	467.2	436.3	409.3	385.6	344.0
135°	652.1	536.1	469.8	413.4	373.5	346.1	303.2
150°	774.0	612.4	530.8	470.5	412.1	360.4	275.5
Run VMG	893.8	707.1	612.4	543.2	475.8	416.2	318.1
Selected Courses							
Windward / Leeward	912.5	772.9	712.8	675.7	643.8	617.8	581.9
All purpose	706.4	612.8	570.2	542.0	518.5	500.8	478.7

Single Number Scoring Options		
Course	Time On Distance	Time On Time
Windward / Leeward	687.8	0.8723
All purpose	551.0	1.0890

### Custom scoring options for Germany

Scoring Option	Time On Time
Triple Number Coastal/Long Distance Low	0.9096
Triple Number Coastal/Long Distance Medium	1.0880
Triple Number Coastal/Long Distance High	1.2074
Triple Number Windward/Leeward Low	0.7120
Triple Number Windward/Leeward Medium	0.8718
Triple Number Windward/Leeward High	0.9823

Performance Curve	6 kt	8 kt	10 kt	12 kt	14 kt	16 kt	20 kt
Coastal/Long Distance	910.6	727.3	641.7	584.0	541.7	504.5	443.4